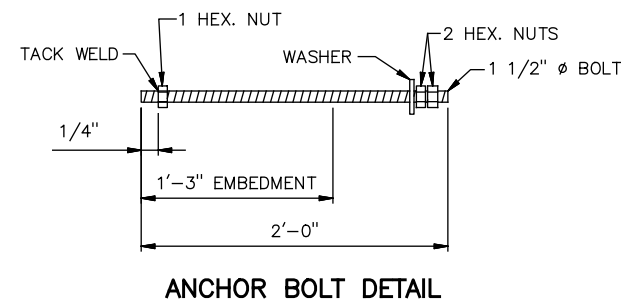
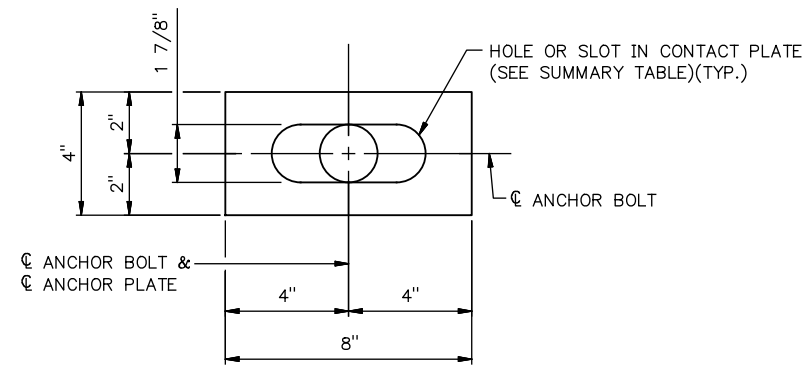


PLAN VIEW



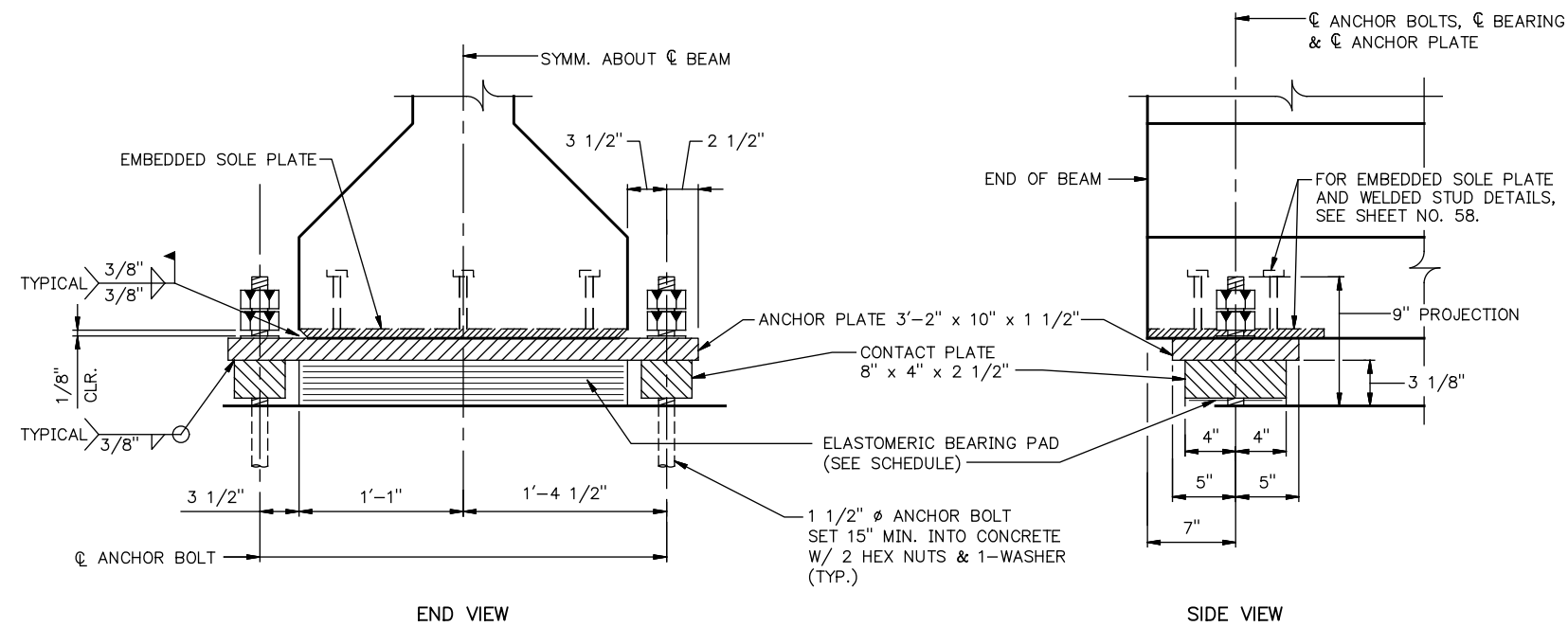
ANCHOR BOLT DETAIL



DETAIL OF CONTACT PLATE
(2 1/2" THICK)

BEARING PAD SCHEDULE FOR PIERS (DURO 60) (100 REQ'D)	
SIZE - 8" x 2'-2" x 3 1/8" WITH	
6 - 1/8" STEEL LAMINATES	
2 - 1/4" EXTERIOR ELASTOMER LAYERS	
5 - 3/8" INTERIOR ELASTOMER LAYERS	

SUMMARY OF DIMENSIONS FOR HOLES & SLOTS		
LOCATION	IN ANCHOR PLATE	IN CONTACT PLATE
EXPANSION OR CONTINUOUS BEARING	2 3/8" x 5 1/2" SLOT	1 7/8" x 5" SLOT
FIXED BEARING	2 3/8" HOLE	1 7/8" HOLE



BEARING ASSEMBLY DETAILS

NOTES: PROVIDE STRUCTURAL STEEL FOR ANCHOR PLATES AND CONTACT PLATES IN ACCORDANCE WITH ASTM A240 (AUSTENITIC STAINLESS STEEL, TYPE 316 OR 316L, CHARPY V-NOTCH TESTING NOT REQUIRED). FOR ANCHOR BOLTS, PROVIDE CONTINUOUSLY THREADED BARS IN ACCORDANCE WITH ASTM A320, CLASS 2, GRADE B8M (AUSTENITIC STAINLESS STEEL, TYPE 316 OR 316L, CHARPY V-NOTCH TESTING NOT REQUIRED). USE AUSTENITIC STAINLESS STEEL NUTS AND WASHERS CONFORMING TO ASTM A194, GRADE 8M, AND ASTM A320, TYPE 316 OR 316L, RESPECTIVELY. PERFORM ALL WELDING CONSISTENT WITH PROCEDURES FOR STAINLESS STEEL.

ANCHOR PLATES FOR BEARING ASSEMBLIES SHALL BE MATCH-MARKED, SHIPPED LOOSE, AND FIELD WELDED TO THE ENCASED SOLE PLATE IN ORDER THAT MINOR HORIZONTAL ADJUSTMENT OF THE BEARING LOCATION MAY BE MADE IF NECESSARY.

METAL USED IN FIELD WELDS WILL NOT BE MEASURED FOR PAYMENT.

ALL BEARING PADS SHALL BE CENTERED BETWEEN ANCHOR BOLTS AT THE PIERS.

AT THE TIME OF SETTING THE BEARING ASSEMBLIES AT THE PIERS, THE SLOT IN THE ANCHOR PLATES SHALL BE CENTERED ON THE ANCHOR BOLTS. THE DIMENSION FROM THE END OF THE BEAM TO THE CENTERLINE OF THE ANCHOR BOLTS MAY VARY FROM THAT SHOWN, DEPENDING ON THE SETTING TEMPERATURE.

BONDING BETWEEN THE ANCHOR PLATE AND BEARING PAD IS REQUIRED ON ALL EXPANSION BEARINGS AT EXPANSION PIERS. BONDING IS NOT REQUIRED ON FIXED BEARINGS OR EXPANSION BEARINGS AT CONTINUOUS EXPANSION PIERS.

BEARING DETAILS
BRIDGE "A" C.R.L. STA. 586+80.46